



Buzzard Hollow Ranch

**BHR'S DESIGNER'S CLASSIC 2011**

*"Blended Perfection"*

*Saturday*

2:00 PM

**May 21, 2011**

at the Ranch, Granbury, TX

Buzzard Hollow Ranch



# BHR'S DESIGNER'S CLASSIC 2011

## "Blended Perfection"

17th Annual  
Production Sale

### SALE DAY PHONE

Office: 817-573-0957

### SCHEDULE OF EVENTS

#### Friday, May 20, 2011

8:00 AM – 5:00 PM – Cattle Viewing & Ranch Tours

12:00 – Beginning of FSFF Silent Auction

#### Saturday, May 21, 2011

8:00 AM – 11:00 AM Sale Cattle Viewing & Bull-A-Rama Judging

12:00 Noon – Cattle Penned For Sale

12:00 Noon – Lunch Served

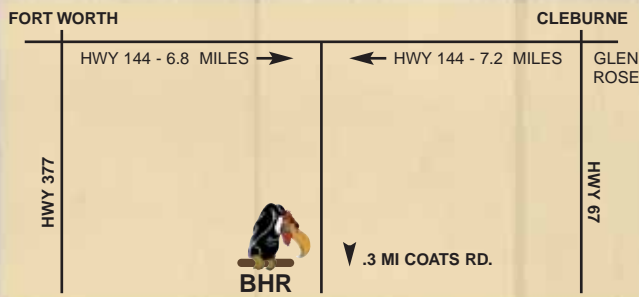
12:30 – Bull-A-Rama Results

2:00 – End FSFF Silent Auction

2:00 – BHR's Designer's Classic Sale

### LOCATION

Buzzard Hollow Ranch, located 6.8 miles South of Granbury, Texas on Hwy. 144 or 7.2 miles North of Hwy. 67 on Hwy 144.



### ASA REPRESENTATIVE

Ed Creason

### AUCTIONEER

Dan Skeels, Edmonton, AB, Canada • 403-843-4756

### SALE CONSULTANTS

Roy Schwake • Office: 903-338-2117 • Mobile: 214-542-8162

Warren Garrett • Mobile: 903-316-2889

Brian Bouchard • Office: 403-946-4999 • Mobile: 403-813-7999

# Saturday

## 2:00 PM

# May 21, 2011

at the Ranch, Granbury, TX



For hotel reservations contact:

## Buzzard Hollow Ranch

Les Aberthal – Owner

Fred Schuetze – Dir. of Livestock Operations

P.O. Box 968, Granbury, Texas 76048

Phone: 817-573-0957 • Fax: 817-573-0967

Email: [bhr@frontierbroadband.com](mailto:bhr@frontierbroadband.com)

Website: [www.BHR-Simmentals.com](http://www.BHR-Simmentals.com)

For those who cannot attend, we are pleased to provide live web casting of the auction through EDJECast.com, allowing you to view and bid online. To register, please visit [www.edjecast.com](http://www.edjecast.com).

Please see page 35



Printed by **the Register**  
2 Simmental Way, Bozeman, MT 59715  
Phone: 406-587-2778 • Fax: 406-587-8853  
[www.simmgene.com](http://www.simmgene.com)

## **PUBLICATIONS REPRESENTED**

*the Register*

*Southern Livestock Standard*

*The Stock Exchange*

*Weekly Livestock Reporter*

## **CATALOG**

ASA Publication, Inc

## **TERMS OF THE SALE**

All cattle must be paid for on Sale Day unless other arrangements have been made and approved by Management.

## **GUARANTEE**

All cattle sell under the Suggested Terms and Conditions of the American Simmental Association and are available in the office the day of the sale.

## **LIABILITY**

All persons who attend the sale do so at their own risk. Neither the consignors (sellers) nor the management assume liability, legal or otherwise, for any accidents that may occur.

## **HERD HEALTH**

All Buzzard Hollow Ranch cattle are from Certified Free Brucellosis Herd #10407 and Accredited Tuberculosis Free Herd #10407. The mature cattle from these herds have been vaccinated with Bovi-Shield Gold FP5 VL5, Scour Bos 9, Ivermectin and Vision 7. All young cattle from these herds have received Vision 7 with Spur and a booster, as well as Bovi Shield Gold FP5 VL5 and a booster depending on age.

Other guest consignors' vaccination programs will be available on sale day or upon request. Required Health Papers will accompany all animals.

## **GUEST CONSIGNORS**

**Dutton Simmentals**, Jack A. Dutton

P.O. Box 426, Dobbin, TX 77333

Home: 936-449-4612 • Mobile: 936-524-3820

Fax: 936-597-7353

Email: jadutton32@duttontree.com

Website: www.duttonsimmentals.com

**Four Starr Simmentals**, Greg Starr

26441 W. 109th Terrace

Olathe, KS 66061

Mobile: 913-634-3494

Email: dvmstarr@yahoo.com

**Hubnik Farms**, Louis & Nancy Hubnik

18208 N. Elm Loop, Temple, TX 76501

Home: 254-985-2448 • Mobile: 254-913-4168

**Indian Creek Cattle Co.**, Greg & Paige Kemp

7079 University Drive West, Huntsville, AL 35806

Home: 256-461-8723 • Office: 256-830-5969

Fax: 256-830-2983 • Mobile: 256-755-0360

Email: kempgregory@netscape.net

Website: www.IndianCreekCattle.com

**Jensen Simmentals**, Steven A. Jensen

24580 W. 319th St., Paola, KS 66071

Office: 913-294-2200 • Home: 913-294-9141

Fax: 913-294-4554 • Mobile: 913-636-2540

Email: jensensimmentals@gmail.com

Website: www.jensensimmentals.com

**Ligon Simmentals**, Jim & Gail Ligon

1362 Dyer Creek Rd., Cookeville, TN 38501

Phone: 931-528-5069 • Mobile: 931-267-1070

Email: gligon@tntech.edu

**Phillips Farm**, Roy & Faye Phillips

104 Manning Mill Road, Adairsville, GA 30103

Home: 770-773-7331 • Mobile: 770-547-9584

Fax: 770-773-9657

Email: phillipsfarmsga@bellsouth.net

**Professional Livestock Co.**, Brian Valentine

4341 FM 899, Mt. Pleasant, TX 75455

Mobile: 509-760-3046 • Fax: 509-346-9306

Email: prostockbv@gmail.com

**Rancho El Sauzal**, Ricardo Alcala

CD. Obregon, Sonora, Mexico

Email: ricardo-leg@hotmail.com

**Rancho Eldorado**, Luis Salinas

Ave. Adolfo Ruiz Cortinez No. 2221 Col. Atasta

Villahermosa, Tabasco, Mexico

Email: salinasfalcon@hotmail.com

**Rancho Los Mautos**, Fernando Platt

Hermosillo, Sonora, Mexico


Email: nany7033@hotmail.com

**Ratcliff Ranches**, Billy Hall

P.O. Box 402, Vinita, OK 74301

Phone: 918-256-5561

Email: ratcliff ranch@netzero.net



**Welcome** to **Buzzard Hollow Ranch** during the most exciting time I have ever experienced in the business. The current prices are certain to be record book highs and no one is certain if we have seen the highs yet.

The market is being driven by consumer demand for high quality red meat, a decline in the total cow population and at the current price structure, not many heifers will be retained for the breeding herd.

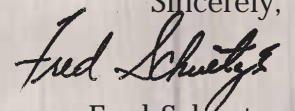
Purebred breeders must remain focused on the production of genetics that are structurally sound, easy calving with accelerated growth from birth to weaning and continued growth at the highest efficiency rate possible while in the feed yards. At the end, the red meat values must be of the highest quality to meet the demands of our consuming public.

Buzzard Hollow Ranch has been committed to these goals in our selection process. I feel that this set of Full Flecks, Fleck influenced Purebreds and Simbrahs being offered carry the genetics that will be accepted within the industry.

The cattle are structurally sound, calved easy and have continued to accelerate in growth and reproductive efficiency. I can honestly say that this set of genetics is the best I have ever produced and it will be difficult to raise another set like them. The cattle have more dimension, depth and shape of rib, width of base, natural thickness and structural soundness than ever before.

I look forward to seeing you on May 21 for a great event with great cattle and great people.

Sincerely,



Fred Schuetze

Director of Livestock Operations

**Buzzard Hollow Ranch**

P.O. Box 968

Granbury, Texas 76048

[www.BHR-Simmentals.com](http://www.BHR-Simmentals.com)

Phone: 817-573-0957

Fax: 817-573-0967

# Proven Donor



*Kykso Hadau*



*Congosim Susi*

## BHR Lady Susi J067E

Longevity is a genetic trait that we must preserve in our Fleckvieh Cattle. Lady Susi does just that. At 12 years of age, she has perfect udder structure with excellent teat quality, sound feet and legs and genetically, she is as good of a producer as any female in the Fleckvieh breed.

Lady Susi is a double bred Hagen daughter that is sired by Kykso Hadau and her dam is Congosim Susi, the Hagen daughter that produced Three Sixes, Orange River, Kalahari, Zulu, Durban and an entire host of females that are working in many programs around the world.

### Her production at BHR:

1. Average Birth Weight: 82.19 lbs.
2. Average Weaning Weight: 662 lbs. no creep
3. Average Adjusted Weaning Weight: 721 lbs. no creep
4. Average Adjusted Yearling Weight: 1,026.37 developed on grain and pasture

Lady Susi is only being offered for sale because her genetic influence has been captured in many females within my program.

Study your lesson here and if you are serious about building a program around sound, proven, recognizable genetics, Lady Susi will do that for you.

Lady Susi sells bred to DDD Sargent Rote 211U for an early calf that could be the next donor or herd sire of the entire breed. Look up Lot 11, a Polled Real Deal daughter that sells in this sale to see what she is made of.



## BHR LADY SUSI J067E

ASA# 2065617 • Calved: 3/30/99 • Tattoo: BHR J067E  
 FB SM • 100% Fleckvieh • 100% South African  
 Consignor: Buzzard Hollow Ranch

1

HAGEN  
**KYKSO HADAU - 2099504**  
 KYKSO DAUNE 78

HAGEN  
**CONGOSIM SUSI - 2101514**  
 VOIGTLAND SELLI 71

| Horned |     |
|--------|-----|
| BW     | 85  |
| 205 Wt | 548 |
| 365 Wt | 859 |

| CE   | BW  | WW   | YW   | MCE  | MM   | MWW  | CW    | YG   | MB    | BF    | REA   |
|------|-----|------|------|------|------|------|-------|------|-------|-------|-------|
| -5.6 | 3.8 | 21.9 | 29.8 | -3.9 | 24.6 | 35.6 | -14.5 | 0.06 | -0.13 | -0.01 | -0.45 |

Bred to DDD Sargent Rote 211U, ASA# 2514064

# BHR Proven Donor Flush Pick



*BHR Lady Skye SA P276E*



*BHR Keona P214E*



*Bar 5 MS Pedodi 806L*

*BHR Windodi SA W06Z*

Natural Calf of Bar 5 MS Pedodi 806L  
Owned by Woonallee Simmentals, Australia

To determine the value of this year's Pick of Donors, all you have to do is evaluate what they have done. BHR Keona P214E produced the high selling bred heifer in 2010, a Dustin daughter selling to Crimson Tide Fleckvieh in Ontario, Canada; then look at the four females in Lot 5 of this sale sired by BHR Haxold.

BHR Lady Skye SA P276E produced the second high selling female in 2010, an Oakes daughter going to Ricardo Alcalá of Sonora, Mexico, as well as the high selling bred Fleckvieh heifer in the 2011 Houston International Simmental/Simbrah Sale going to Carlos Ramirez, Ganadera CRE, of Panama.

Bar 5 Ms Pedodi 806L is the dam of BHR Haxold, the sire of the four females in this sale out of Keona and the high selling open heifer in 2010, a Dustin daughter going to Tom and Lizzy Baker of Woonallee Simmentals in Australia.

Each of these females represents different phenotypic types that can be blended into a finished product that meets your specific needs.

Keona brings the strongest cow family, Voigtland Selli 71, in the Fleckvieh business to the table. This cow family has produced such proven Herd Sires as BHR Three Sixes, BHR Orange River, BHR Kalahari, BHR Zulu, BHR Durban and BHR Bantu, to name a few, and proven donors such as BHR Ashante, BHR Chantall, BHR Lady Susi J067E, BHR Karrolynn, BHR Lady Susi 207K and Keona, to name a few.



## BHR LADY SKYE SA P276E

ASA# 2280266 • Calved: 10/14/04 • Tattoo: BHR P276E  
FB SM • 100% Fleckvieh • 100% South African  
Consignor: Buzzard Hollow Ranch

**2A**

ERICO PRIMAL  
BHR THREE SIXES SA L666E – 2151235  
CONGOSIM SUSI  
OVERAL BIRNER  
BHR MS SWAZI G100E – 1963085  
WISP-WILL PETAL

| Horned |     |
|--------|-----|
| BW     | 81  |
| 205 WT | 620 |
| 365 WT | 858 |

| CE | BW  | WW   | YW   | MCE  | MM  | MWW  | CW   | YG   | MB   | BF    | REA   |
|----|-----|------|------|------|-----|------|------|------|------|-------|-------|
| -2 | 2.7 | 26.6 | 45.5 | -2.7 | 6.6 | 19.9 | -6.5 | 0.03 | 0.07 | -0.03 | -0.39 |



## BHR KEONA P214E

ASA# 2295255 • Calved: 3/3/04 • Tattoo: BHR P214E  
FB SM • 100% Fleckvieh • 100% South African  
Consignor: Buzzard Hollow Ranch

**2B**

SALERIKA EVAN  
BAR 5 SA EVAN 440L – 2179006  
AI-AI SISKA  
ERICO PRIMAL  
BHR ASHANTE SA L137E – 2151205  
CONGOSIM SUSI

| Horned |     |
|--------|-----|
| BW     | 80  |
| 205 WT | 529 |
| 365 WT | 793 |

| CE  | BW  | WW   | YW   | MCE  | MM  | MWW  | CW   | YG   | MB   | BF    | REA   |
|-----|-----|------|------|------|-----|------|------|------|------|-------|-------|
| 1.3 | 4.1 | 24.1 | 40.7 | -7.9 | 1.1 | 13.1 | -7.2 | 0.07 | 0.07 | -0.01 | -0.36 |



## BAR 5 MS PEDODI 806L

ASA# 2197862 • Calved: 9/24/01 • Tattoo: CO 806L  
FB SM • 100% Fleckvieh • 100% South African  
Consignor: Buzzard Hollow Ranch

**2C**

MON-BIJOU PIONA 84  
SALERIKA EVAN – 8815889  
DAN-JACO ERMA 81  
DIOR  
KYKSO PEDODI – 8778857  
KYKSO PEMDOBI 81

| Horned |     |
|--------|-----|
| BW     | 95  |
| 205 WT | 615 |

| CE   | BW  | WW   | YW   | MCE  | MM   | MWW | CW  | YG   | MB   | BF    | REA   |
|------|-----|------|------|------|------|-----|-----|------|------|-------|-------|
| -2.9 | 3.9 | 36.4 | 54.8 | -5.7 | 14.8 | 33  | 0.3 | 0.09 | 0.09 | -0.01 | -0.36 |

BHR Lady Skye then adds the proven cow line on the dam side of BHR Ms Swazi G100E, a Wisp-Will Mandrake grand daughter out of Wisp-Will Petal, a Ru-Dev Pam daughter. Keona adds the AI-AI Siska cow family in the top side of that pedigree.

Bar 5 Ms Pedodi 806L brings genetics from one of the most impressive cows in all of South Africa, Kykso Pedodi, and is one of only two Kykso Pedodi daughters in North America. On the top side, she brings in Dan-Jaco Erma 81.

So as you can see, each female, although different in type, all bring proven cow families and predictability to the table. You select the one that fits your program and the sire and start the next generation of genetics at your farm.

Selling choice to flush with a guarantee of 6 viable embryos, but you will receive all viable embryos up to 10 and then they will be split 50-50 with BHR. BHR also warrants a 50% conception if work is done by an accredited embryologist. All flushing and freezing will be done at BHR as soon as you select a sire after the sale. No charge for flushing and freezing and if a BHR sire is chosen, there will be no charge for semen. In most cases, embryos will be exportable if the sire qualifies.

# BHR Next Generation Donor Flush Pick



## BHR NORA W180

**3A**

ASA# 2520873 • Calved: 12/6/09 • Tattoo: BHR W180  
FB SM • 100% Fleckvieh • 50% South African  
Consignor: Buzzard Hollow Ranch

GIBBYS NICHOLAS 302N  
GIBBYS REAL DEAL 25T – 2499867  
GIBBYS NABRISKA 16N  
BAR 5 SA HERO 823M  
BHR AFFRICA SA R369 – 2310490  
BHR MELISSA M357E

| Polled |     |
|--------|-----|
| BW     | 92  |
| 205    |     |
| WT     | 611 |
| 365    |     |
| WT     | 836 |

| CE  | BW  | WW   | YW   | MCE  | MM | MWW  | CW  | YG    | MB    | BF    | REA   |
|-----|-----|------|------|------|----|------|-----|-------|-------|-------|-------|
| 4.7 | 6.2 | 31.2 | 49.1 | -4.6 | 11 | 26.6 | 0.7 | -0.01 | -0.21 | -0.02 | -0.12 |

Cow families have again produced two individuals that have the potential to become matrons in the Fleckvieh breed.

Cow families are what the BHR program is built around and it continues to keep our program on the leading edge of predictability.

BHR Nora and BHR Agnes are different types of females both phenotypically and genotypically. Nora is a polled female out of the homozygous Gibbys Real Deal and her dam BHR R369 is a really moderate framed female sired by Bar 5 Hero and her dam is a Doorn daughter out of BHR Lady Susi J067E, which brings to the genetic composite Congosim Susi and Voigtland Selli 71.

Nora herself is very moderate with a tremendous amount of thickness down the top with excellent feet and legs. She represents the strengths of the BHR BLEND, probably needs to be softer, but just full of power.

BHR Anges has the softness not seen in Nora, and represents the BHR BLEND again with all the strengths from a pedigree that reads like the who's who in the German Fleckvieh World on the bottom side of the pedigree. Egol, Egel, Egelhof, Holb, Honig, Horex P, Haxl, Balist, Baldo, Bali, Bayer, Direktor, Dirigent and Dior are sires that show in her pedigree along with one of the strongest cow families in all of Germany, Lilli, not to mention the Voigtland Selli 71 cow family on the top side and the great Austrian sire Hagen.

I know she doesn't have eye pigmentation, but if we don't breed cattle with this much strength and cow family predictability we are surely not cattle breeders.

Selling choice to flush with a guarantee of 6 viable embryos, but you will receive all viable embryos up to 10 and then they will be split 50-50 with BHR. BHR also warrants a 50% conception if work is done by an accredited embryologist. All flushing and freezing will be done at BHR as soon as you select a sire after the sale. No charge for flushing and freezing and if a BHR sire is chosen, there will be no charge for semen. In most cases, embryos will be exportable if the sire qualifies.



## BHR AGNES W184

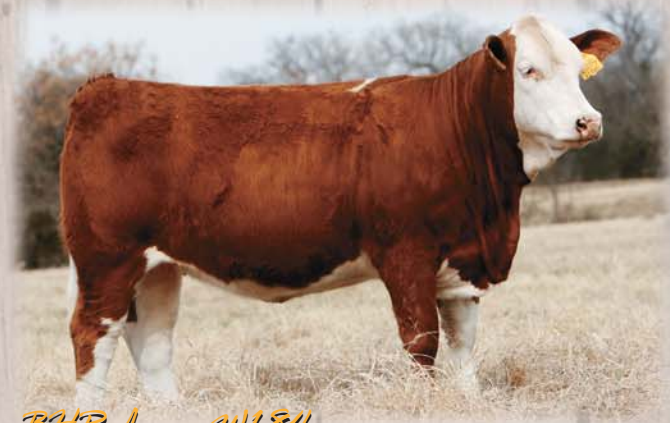
**3B**

ASA# 2520876 • Calved: 12/10/09 • Tattoo: BHR W184  
FB SM • 100% Fleckvieh • 50% South African  
Consignor: Buzzard Hollow Ranch

BHR THREE SIXES SA L666E  
BHR OAKES SA R870 – 2310527  
BHR SHANATA M272E  
EGOL  
BHR MS LILLY K273E – 2090622  
LILIAN

| Horned |     |
|--------|-----|
| BW     | 87  |
| 205    |     |
| WT     | 628 |
| 365    |     |
| WT     | 947 |

| CE | BW  | WW   | YW   | MCE | MM  | MWW  | CW  | YG  | MB   | BF   | REA  |
|----|-----|------|------|-----|-----|------|-----|-----|------|------|------|
| 0  | 3.5 | 37.7 | 62.3 | 2.2 | 7.7 | 26.5 | 4.5 | 0.1 | 0.05 | 0.01 | -0.2 |



*BHR Agnes W184*



*Gibbys Real Deal - Sire of Lot 3A*



*Diamond T 273U Mona Lisa*



## DIAMOND T 273U MONA LISA

**4**

ASA# 2573533 • Calved: 1/3/08 • Tattoo: LZRT 273U  
FB SM • 100% Fleckvieh • 50% South African  
Consignor: Professional Livestock Company

KYKSO HADAU  
BHR BARON SA 2842P – 2419308  
TRANS-MAGALIES MABIE  
ANCHOR T LEGEND 7H  
DIAMOND T LENEFF – 9746912  
KCN JO NEFF

| Horned |     |
|--------|-----|
| BW     | 90  |
| 205    |     |
| WT     | 621 |

| CE   | BW  | WW   | YW   | MCE  | MM   | MWW  | CW   | YG   | MB   | BF   | REA   |
|------|-----|------|------|------|------|------|------|------|------|------|-------|
| -0.8 | 2.6 | 29.8 | 48.4 | -3.4 | 14.5 | 29.4 | -5.1 | 0.00 | 0.04 | 0.00 | -0.09 |

Mona Lisa was rightfully named for her unique paint job, but design and production ability is a masterpiece. She is moderate framed, capacious, sound footed, with an udder to be envious of. Mona made her claim to fame as the first NAILE Grand Champion Fullblood female in 2009. Beyond her phenotype, Mona blends some of the world's most renowned genetics. Her sire, BHR Baron, a direct Kykso Hadau son, has done a fantastic job for Troy and Melanie Cerny of Diamond T. He now walks the pastures of Bonchuk Farms. Mona's dam is a daughter of Anchor T Legend out of foundation cow, KCN Jo Neff. Jo Neff, a direct Canadian Neff, is still producing at 16 years of age and has made a considerable impact on the Diamond T program. Mona will make an impact on the Professional Livestock program and with this opportunity, your program as well. This will be her first flush. Currently, she is nursing a 2/14/2011 heifer by ProStock Rainmaker [Reserve x Morgana].

Selling: Flush to sire of your choice. Guarantee 5 transferable embryos. All embryos are the buyer's. ET Procedures will be performed at BHR and all costs except, semen and shipping, will be the responsibility of the seller.

# Pick of Bred Fleckvieh Heifers

I don't believe that you can find another set of flush mates that are as strong as these four females. Look at the depth of rib, thickness down the top, strength in their feet and legs and width of base with a rib structure that shows both depth and shape needed for high capacity. Each shows excellent spine length and they are as feminine as you can find.

I have talked about cow families and the strength of these females can be traced to the same cow families Voigtland Selli 71 and Kykso Pedodi.

Evaluate them phenotypically and then look at their data and select the one that you feel is the best.

Each is bred to BHR Halmark Elite with sexed female semen that brings another set of cow families to add another generation of strength to this great package.

To add another dimension to how strong this package is, look at their full brothers that will be a part of this sale as a pick of future herd sires, Lot 83A and Lot 83B.



*BHR Larkspur SA W084E*

## BHR LARKSPUR SA W084E

ASA# 2499917 • Calved: 9/16/09 • Tattoo: BHR W084E  
FB SM • 100% Fleckvieh • 100% South African  
Consignor: Buzzard Hollow Ranch

BAR 5 SA OPTIMAL 447L  
**BHR HAXOLD 690P - 2428831**  
BAR 5 MS PEDODI 806L  
BAR 5 SA EVAN 440L  
**BHR KEONA P214E - 2295255**  
BHR ASHANTE SA L137E

| Horned |     |
|--------|-----|
| BW     | 83  |
| 205 Wt | 547 |
| 365 Wt | 781 |

| CE  | BW  | WW | YW   | MCE  | MM  | MWW  | CW  | YG   | MB   | BF    | REA   |
|-----|-----|----|------|------|-----|------|-----|------|------|-------|-------|
| 1.3 | 4.3 | 33 | 52.9 | -6.7 | 7.1 | 23.6 | 0.1 | 0.14 | 0.13 | -0.01 | -0.54 |

Bred to BHR Halmark Elite H835E sexed female semen, ASA# 2004999



*BHR Juniper SA W085E*



*BHR Nettie SA W091E*

## BHR JUNIPER SA W085E

ASA# 2499918 • Calved: 9/20/09 • Tattoo: BHR W085E  
FB SM • 100% Fleckvieh • 100% South African  
Consignor: Buzzard Hollow Ranch

BAR 5 SA OPTIMAL 447L  
**BHR HAXOLD 690P - 2428831**  
BAR 5 MS PEDODI 806L  
BAR 5 SA EVAN 440L  
**BHR KEONA P214E - 2295255**  
BHR ASHANTE SA L137E

| Horned |     |
|--------|-----|
| BW     | 79  |
| 205 Wt | 541 |
| 365 Wt | 891 |

| CE  | BW  | WW | YW   | MCE  | MM  | MWW  | CW  | YG   | MB   | BF | REA   |
|-----|-----|----|------|------|-----|------|-----|------|------|----|-------|
| 1.3 | 4.3 | 33 | 52.9 | -6.7 | 7.1 | 23.6 | 0.1 | 0.13 | 0.09 | 0  | -0.37 |

Bred to BHR Halmark Elite H835E sexed female semen, ASA# 2004999



## BHR WORBLER SA W089E

ASA# 2499919 • Calved: 9/22/09 • Tattoo: BHR W089E  
FB SM • 100% Fleckvieh • 100% South African  
Consignor: Buzzard Hollow Ranch

BAR 5 SA OPTIMAL 447L  
**BHR HAXOLD 690P - 2428831**  
BAR 5 MS PEDODI 806L  
BAR 5 SA EVAN 440L  
**BHR KEONA P214E - 2295255**  
BHR ASHANTE SA L137E

| Horned |     |
|--------|-----|
| BW     | 87  |
| 205 Wt | 585 |
| 365 Wt | 872 |

| CE  | BW  | WW | YW   | MCE  | MM  | MWW  | CW  | YG  | MB   | BF    | REA  |
|-----|-----|----|------|------|-----|------|-----|-----|------|-------|------|
| 1.3 | 4.3 | 33 | 52.9 | -6.7 | 7.1 | 23.6 | 0.1 | 0.1 | 0.08 | -0.01 | -0.4 |

Bred to BHR Halmark Elite H835E sexed female semen, ASA# 2004999



## BHR NETTIE SA W091E

ASA# 2499920 • Calved: 9/25/09 • Tattoo: BHR W091E  
FB SM • 100% Fleckvieh • 100% South African  
Consignor: Buzzard Hollow Ranch

BAR 5 SA OPTIMAL 447L  
**BHR HAXOLD 690P - 2428831**  
BAR 5 MS PEDODI 806L  
BAR 5 SA EVAN 440L  
**BHR KEONA P214E - 2295255**  
BHR ASHANTE SA L137E

| Horned |     |
|--------|-----|
| BW     | 83  |
| 205 Wt | 612 |
| 365 Wt | 885 |

| CE  | BW  | WW | YW   | MCE  | MM  | MWW  | CW  | YG    | MB | BF    | REA   |
|-----|-----|----|------|------|-----|------|-----|-------|----|-------|-------|
| 1.3 | 4.3 | 33 | 52.9 | -6.7 | 7.1 | 23.6 | 0.1 | -0.04 | 0  | -0.04 | -0.14 |

Bred to BHR Halmark Elite H835E sexed female semen, ASA# 2004999

## Pick of 7 Calves Due September 2011

Many of you remember LCF 690W when I purchased her as the high selling heifer at the 2010 Little Creek Farm Sale. 690W is a polled heifer out of Bar 5 Expert and LCF 021T, who is a polled daughter out of Daytons Polled Neumann and KFFC Jumbo Hafke, whose bottom side of her pedigree brings these great sires: Hafke, Hackenburg, Antonius, and Z O Niner. 690W was mated to BHR Halmark Elite Sexed female semen to add the cow families of Elsa, Lilli and Liesel, along with sires such as Halling, Horror, Hannes, Dirteck, Dirigent, Haxl and Honig. The mating produced 7 pregnancies that will be due in September of this year and these calves will be exceptional in depth of rib, width of base, strong topped and full of red meat and there should be a polled heifer that will be as strong as any polled female ever produced and if there is a bull calf he will be the next HERD SIRE of the breed. Selling the choice of this set of calves and the pick can be made at weaning in 2012. Half of the purchase price will be due after the sale and the balance will be due when the calf is selected. BHR will retain one viable flush to be done at the new owner's discretion. BHR also guarantees that this female will not be flushed or bred to Halmark Elite for a minimum of 3 years from the date of this sale. **The future is here today !!!!!!!**



*LCF Winsome 690W*



## PICK OF CALVES - 7 TO CHOOSE FROM

**6** Calved: Due 9/12/11  
FB SM • 100% Fleckvieh • 32.8% South African  
Consignor: Buzzard Hollow Ranch

**BHR HALLMARK**  
**BHR HALMARK ELITE H835E XXX - 2004999** **Horned**  
LETTMAIR'S ELSA

BAR 5 P SA EXPERT 826M  
**LCF WINSOME 690W - 2503540**  
LITTLE CREEK TOMMIE 021T

| Projected EPDs |      |       |       |      |       |       |       |       |       |       |       |
|----------------|------|-------|-------|------|-------|-------|-------|-------|-------|-------|-------|
| CE             | BW   | WW    | YW    | MCE  | MM    | MWW   | CW    | YG    | MB    | BF    | REA   |
| 0.65           | 3.25 | 31.85 | 45.95 | -4.4 | 17.15 | 33.10 | -5.90 | -0.02 | -0.12 | -0.02 | -0.15 |

# Bred Fleckvieh Heifers



## BHR OLIVIA SA W087

7

ASA# 2499931 • Calved: 9/21/09 • Tattoo: BHR W087  
FB SM • 100% Fleckvieh • 100% South African  
Consignor: Buzzard Hollow Ranch

BAR 5 SA EVAN 440L  
**WOONALLEE BOULDER – 2465652**  
BHR ASHANTE SA L137E  
BHR ZULU G548E  
**BHR TIARA R043E – 2332475**  
BAR 5 SA PEARL 832M

| Horned |     |
|--------|-----|
| BW     | 83  |
| 205 WI | 627 |
| 365 WI | 882 |

| CE  | BW  | WW | YW   | MCE  | MM   | MWW  | CW | YG   | MB   | BF    | REA   |
|-----|-----|----|------|------|------|------|----|------|------|-------|-------|
| 2.4 | 3.8 | 28 | 42.4 | -2.1 | 12.2 | 26.2 | -7 | 0.09 | 0.07 | -0.01 | -0.49 |

Bred to BHR Haxold 690P, ASA# 2428831

- Strong Cow Families
- Calving Ease
- Growth
- Milk
- Excellent udder quality
- Great Disposition
- A Blend of maternal and power genetics
- Sells bred to BHR Haxold for the next generation of genetics



*BHR Olivia SA W087*



## BHR MAPLE W095

8

ASA# 2499868 • Calved: 10/2/09 • Tattoo: BHR W095  
FB SM • 100% Fleckvieh  
Consignor: Buzzard Hollow Ranch

GIBBYS NICHOLAS 302N  
**GIBBYS REAL DEAL 25T – 2499867**  
GIBBYS NABRISKA 16N  
SV BAVARIAN 7C  
**BHR ELENA L163E – 2151221**  
LETTMAIR'S ELSA

| Polled |     |
|--------|-----|
| BW     | 78  |
| 205 WI | 498 |
| 365 WI | 790 |

| CE  | BW  | WW | YW   | MCE  | MM   | MWW  | CW    | YG    | MB    | BF    | REA   |
|-----|-----|----|------|------|------|------|-------|-------|-------|-------|-------|
| 1.7 | 2.9 | 20 | 34.6 | -7.3 | 18.4 | 28.4 | -12.5 | -0.01 | -0.03 | -0.01 | -0.19 |

Bred to BHR Sir Ro-Leo 680K, ASA# 2085309

- Polled
- Low birth weight
- Straight German Breeding
- Moderate framed
- Great cow families
- Superior milk production
- Bred to BHR Sir Ro-Leo 680K to maintain the old world genetics



*BHR Maple W095*



## BHR LIBERTY W096E

9

ASA# 2499869 • Calved: 10/6/09 • Tattoo: BHR W096E  
FB SM • 100% Fleckvieh • 50% South African  
Consignor: Buzzard Hollow Ranch

GIBBYS NICHOLAS 302N  
**GIBBYS REAL DEAL 25T – 2499867**  
GIBBYS NABRISKA 16N  
BHR DOORN G629E  
**BHR FIORENZA SA P235E – 2250160**  
BHR HESTIA M237E

| Polled |     |
|--------|-----|
| BW     | 100 |
| 205 WI | 589 |
| 365 WI | 773 |

| CE  | BW  | WW   | YW   | MCE | MM  | MWW  | CW  | YG   | MB    | BF    | REA   |
|-----|-----|------|------|-----|-----|------|-----|------|-------|-------|-------|
| 1.9 | 5.9 | 30.4 | 56.3 | -4  | 9.1 | 24.3 | 4.9 | 0.01 | -0.15 | -0.02 | -0.12 |

Bred to Sunny Valley Sargent 24S, ASA#2390219

- BHR Polled Blend Genetics
- Flush mate sister to BHR W086E purchased by Ricardo Alcala and Fernando Platt of Sonora Mexico at the 2010 North American Sale
- Thick topped
- Wide based
- Excellent feet and legs
- Great disposition
- Bred to Sunny Valley Sargent



*BHR Liberty W096E*